

**Noble Way to Your Success** Lonnie Noble is a powerful and inspirational speaker. Using his genuine love for people and his personal / professional experience, Lonnie has become very successful as an individual and personal motivator.

**Idaho: Cost Drivers and the Uninsured (TENTATIVE)**

Senator Dean Cameron;  
Representative Margaret Henbest

Come learn the results of a recent study regarding Idaho's Health Care Costs and Options to Improve Health Care Access. Are there future plans for developing a comprehensive state vision for addressing the rising costs of health care and the 16—18% of the non-elderly population that is currently uninsured?

**Idaho Health Care Summit** Joyce McRoberts will discuss recommendations from the Health Care Summit and how the governor will take steps in the future to improve healthcare for Idahoans.

**The Emergence of CDHC** Brian Miskovitz will begin with a review of the marketplace and cover the differences between FSA, HRA, and HSA's and discuss the advantages of HSA's.

**Small Group Compliance Issues** Eileen Mundorff will review the latest "hot issues" and answer your questions. Some issues that will be covered include: list billings, maternity benefits, enrollment for newborns/ adopted children and dependent age changes.

**Access to Health Program** Cynthia Rivera and Heidi Diamond will discuss how you can be a part of a program that helps small employers pay for health insurance for qualified employees and their family.

**What the Future May Hold for Health Care Financing**  
**Janet Trautwein, NAHU** On a national level, healthcare is one of the hottest topics this year. This is your chance to hear about the key issues that may affect your business which are being discussed nationally.



**Members:** \$85 Early Registration postmarked by March 21, 2008. \$100 after March 21st. Recruit a new IAHU member and get an additional \$10.00 off your registration. (upon confirmation).

**Non-Members:** \$150 Early Registration postmarked by March 21, 2008. \$170 after March 21, 2008.

**\*Non-Members\*** Join within 30 days of the conference and receive a \$25 refund. (upon confirmation\*).

**Awards Banquet:**  
April 8, 2008 6:00-9:00pm

Includes social hour, dinner, key note speaker (TBD), and awards. Cost is \$50 each or \$450 for a table of 8 with signage.

Money must be received with the registration form for early registration discount. Make checks payable to **IAHU** and mail to:

**IAHU**  
**PO Box 8102**  
**Boise, ID 83707**



## 24th Annual Idaho Association of Health Underwriters Health Symposium

**Doubletree Riverside**  
**Wednesday, April 9, 2008**  
**8:00 a.m. to 5:00 p.m.**  
**Up to 4 CE Credits**

Awards Banquet  
Tuesday, April 8, 2008  
6:00—9:00pm  
Doubletree Riverside

**For more information on these topics,  
please visit our website at  
[www.iahu.org](http://www.iahu.org)**

# 24th Annual Health Symposium Schedule

|               |   |  |  |
|---------------|---|--|--|
| 7:30—8:00am   | <b>Registration &amp; Visit Health Exhibitors</b>   |  |  |
| 8:00 — 8:15am | <b>Color Guard, Opening Remarks</b>   |  |  |
| 8:15—8:35am   | <b>Governor Butch Otter</b>   |  |  |
| 8:35—9:30am   | <b>General Session</b><br><b>Lonnie Noble — Goals / Noble Way to Your Success</b>   |  |  |
| 9:30—10:00am  | <b>Morning Break &amp; Visit Exhibitors</b>   |  |  |
| 10:00—11:00am | <b>Idaho: Cost Drivers and the Uninsured</b><br>Senator Dean Cameron<br>Rep. Margaret Henbest<br>(TENTATIVE)  | <b>Small Group Compliance Issues</b><br>Eileen Mundorff, DOI | <b>PBM 101</b><br>Chris Brown, Express Scripts   |
| 11:00—11:15am | <b>Break</b>  |  |  |
| 11:15—12:15pm | <b>ID Health Care Summit</b><br>Joyce McRoberts   | <b>Small Group Compliance Issues</b><br>Eileen Mundorff, DOI | <b>E-Health App</b><br>Brian Cronin              |
| 12:15—1:30pm  | <b>Open Lunch (Buffet in Fire Pit Area) &amp; Visit Exhibitors</b><br><b>Business Center (work space available, free wi-fi)</b>   |  |  |
| 1:30—2:30pm   | <b>The Emergence of CDHC</b><br>Brian Miskovitz   | <b>Access Program</b><br>Cynthia Rivera / Heidi Diamond      | <b>Wellness</b><br>Erica Smith, Specialty Health |
| 2:30—2:50pm   | <b>Afternoon Break &amp; Visit Exhibitors</b>   |  |  |
| 2:50—4:00pm   | <b>General Session</b><br><b>Introduction by Scott Leavitt, NAHU President-Elect</b><br><b>“What the Future May Hold for Healthcare Financing”</b><br><b>Janet Trautwein, NAHU Executive Vice President</b> |  |  |
| 4:00—5:00pm   | <b>No host bar, hors d’oeuvres &amp; Vendor Drawings</b><br><b>Fire Pit Area</b>  |  |  |

## About our Speakers



**Governor C.L. “Butch” Otter** was elected Governor of Idaho on November 7, 2006. He previously served three terms in Congress representing Idaho’s 1<sup>st</sup> District (2000-2006). When he was elected to Congress, Governor Otter was serving his fourth term as Idaho’s Lieutenant Governor. He served in that office longer than anyone in Idaho history.



**Lonnie Noble** was born in Fairfax, Virginia as sixth of nine children. Lonnie’s career began as a paperboy starting with fifteen customers which he grew to 95 within six months. Lonnie’s sales career has been marked with countless awards and a loyal client base of over five thousand.



**Representative Margaret Henbest**, District 16, House Seat A Committees:

- Appropriations
- Health & Welfare
- Joint Finance-Appropriations Committee
- Joint Legislative Oversight - Co Chair

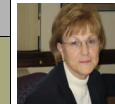


**Senator Dean Cameron**, District 26, Committees:

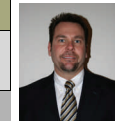
- Commerce & Human Resources
- Finance—Chair
- Joint Finance-Appropriations Committee Co-Chair
- Resources & Environment



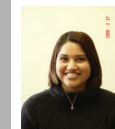
**Eileen Mundorff** joined the Department of Insurance as a Consumer Affairs Officer in March 2001. In June 2005, she received her Associate in Insurance Regulatory Compliance (AIRC) from the Life Office Management Association (LOMA).



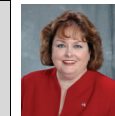
**Joyce McRoberts** served in the Idaho Senate from 1988-1995. She was named Legislator of the Year in 1992. In June 2007, at Governor Otter’s request, Joyce came out of retirement to work for him as the Project Manager on Health Care.



**Brian Miskovitz** is the Executive Vice President & CFO of First HSA. He has served on many committees and participated in President Bush’s 2006 Healthcare Summit in Washington, DC. Brian currently serves as a member of The Counsel for Affordable Healthcare (CAHI).



**Cynthia Rivera** is employed as a Family Medicaid Self-Reliance Specialist for the Department of Health and Welfare.  
**Heidi Diamond** is employed as a Self Reliance Specialist with the Idaho Department of Health and Welfare.



**Janet Trautwein** is Executive Vice President and CEO of the National Association of Health Underwriters. Janet’s background includes 17 years in the insurance business as a principal in an insurance agency specializing in health insurance, employee benefits, and related products.